



MADHAV INTERNATIONAL SCHOOL

Affiliated to the Council for Indian School Certificate Examinations (CISCE) - GU031/2014
Pranaminagar, Vastral, Ahmedabad-382418, Gujarat
Ph. +91-079-29292753 | Email: admin@madhavinternationalschool.org

Diwali Worksheet-(2016-17)

GRADE -5 (Computer)

Notes : Prepare a file, write the questions along with answers in two sides of paper. Prepare a presentation on any one topic; bring in pen-drive or CD.

Q1 Answer the following questions

1. What do you mean by Presentation?
2. Benefits of Presentation.
3. What are the different Views in PowerPoint?
4. Explain Slide Show View.
5. What is Slide Layout?
6. Explain Placeholder with different options along with its image.
7. What is Formatting of text in PowerPoint?
8. What are Do's and Don'ts of PowerPoint?

Q2. Prepare a presentation on any one

1. Input and Output Devices of Computer.
2. Generations of a Computer.
3. Photo Album of your any relatives function.
4. Data Storage Media

THE END



MADHAV INTERNATIONAL SCHOOL

Affiliated to the Council for Indian School Certificate Examinations (CISCE) - GU031/2014
Pranaminagar, Vastral, Ahmedabad-382418, Gujarat
Ph. +91-079-29292753 | Email: admin@madhavinternationalschool.org

Diwali Worksheet-(2016-17)

GRADE -5 (Computer)

Notes : Prepare a file, write the questions along with answers in two sides of paper. Prepare a presentation on any one topic; bring in pen-drive or CD.

Q1 Answer the following questions

1. What do you mean by Presentation?
2. Benefits of Presentation.
3. What are the different Views in PowerPoint?
4. Explain Slide Show View.
5. What is Slide Layout?
6. Explain Placeholder with different options along with its image.
7. What is Formatting of text in PowerPoint?
8. What are Do's and Don'ts of PowerPoint?

Q2. Prepare a presentation on any one

1. Input and Output Devices of Computer.
2. Generations of a Computer.
3. Photo Album of your any relatives function.
4. Data Storage Media

THE END



MADHAV INTERNATIONAL SCHOOL

Affiliated to the Council for Indian School Certificate Examinations (CISCE) - GU031/2014
Pranaminagar, Vastral, Ahmedabad-382418, Gujarat
Ph. +91-079-29292753 | Email: admin@madhavinternationalschool.org

Diwali assignment

GRADE -5(English paper-1)

NAME: _____

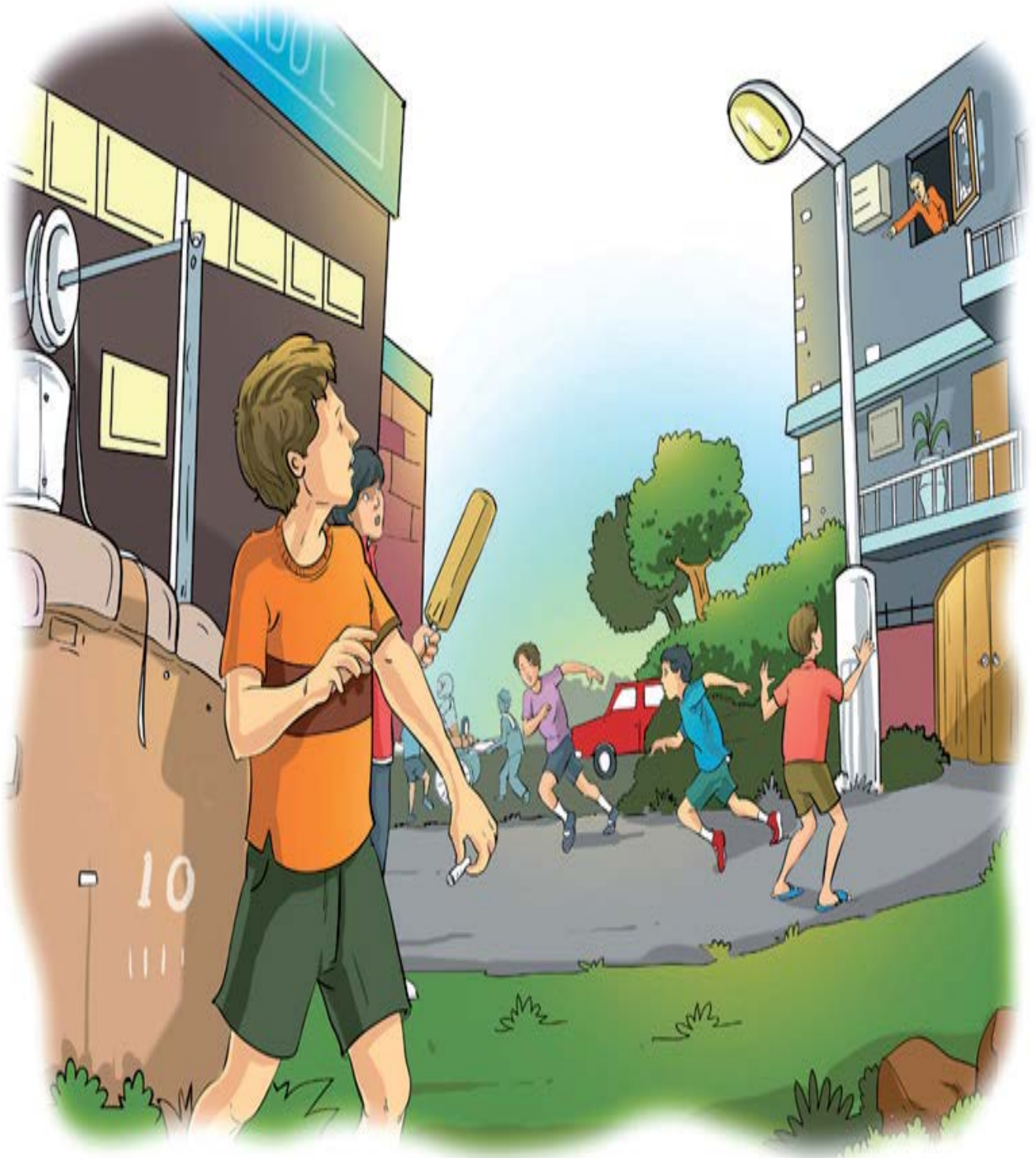
Date: 08/10/2016

Roll No: _____

[A] See picture and write 15 lines about it



[B] See picture and write 15 lines about it





MADHAV INTERNATIONAL SCHOOL

Affiliated to the Council for Indian School Certificate Examinations (CISCE) - GU031/2014
Pranaminagar, Vastral, Ahmedabad-382418, Gujarat
Ph. +91-079-29292753 | Email: admin@madhavinternationalschool.org

Name : _____

DIWALI VACATION WORKSHEET

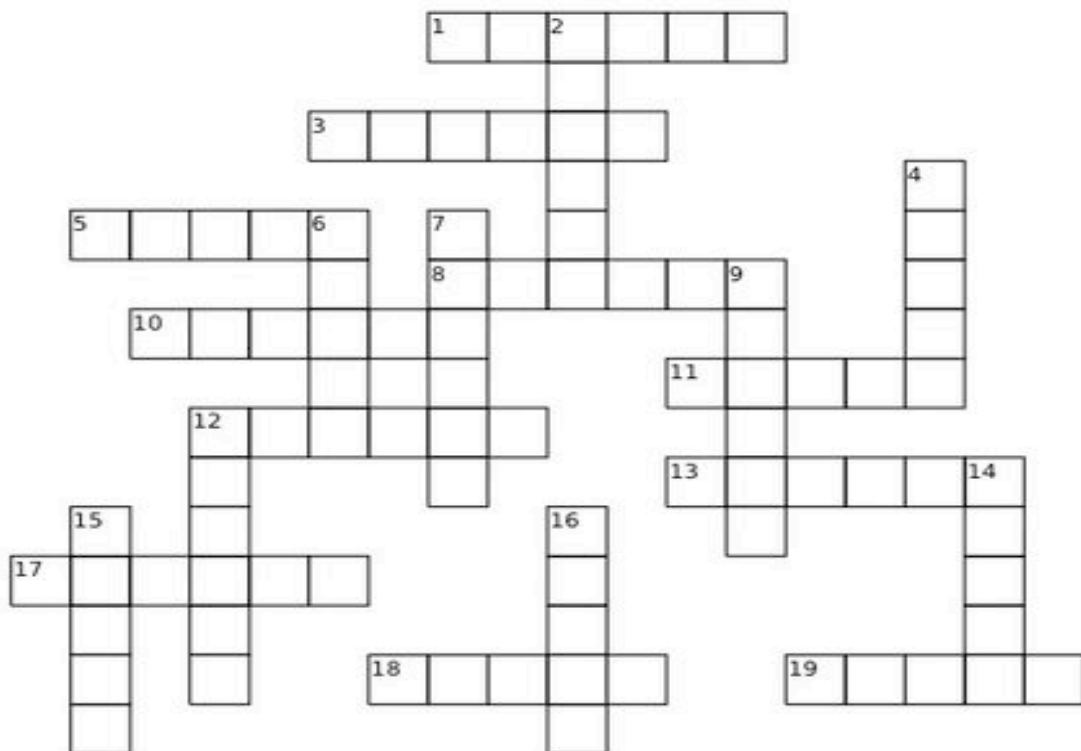
Roll No : _____

Grade : 5 Sub:Mathematics

Date : 27/10/2016

Adding Decimals

Add the decimals below and then put the sum into the puzzle. Remember to line up the decimal points.



	Across
1	$59.29 + 82.68$
3	$63.41 + 74.28$
5	$32.83 + 43.92$
8	$19.04 + 82.37$
10	$83.53 + 39.41$
11	$62.18 + 59.32$
12	$89.45 + 26.75$
13	$67.27 + 94.38$
17	$94.50 + 39.37$
18	$52.38 + 41.65$
19	$12.97 + 42.90$

	Down
2	$48.02 + 68.29$
4	$91.53 + 50.97$
6	$29.43 + 30.53$
7	$71.04 + 43.23$
9	$92.35 + 30.25$
12	$76.49 + 53.64$
14	$13.75 + 37.63$
15	$53.23 + 29.84$
16	$38.54 + 19.53$

• Decimal match

Write the answer to each decimal expression in the space provided. Find your answer in one of the boxes at the bottom of the page. In the correct box, write the word that matches your answer. Once you have filled in all the boxes, you will discover the answer to the following riddle:

Hint: Write expression as fraction first then convert into decimals

1. Three tenths = _____ = _____
2. Thirteen and one thousandth = _____ = _____
3. Four and four hundredths = _____ = _____
4. Seven and fifteen thousandths = _____ = _____
5. Thirteen and one hundredth = _____ = _____
6. Four and four thousandths = _____ = _____
7. Three hundredths = _____ = _____
8. Thirteen and one tenth = _____ = _____
9. Four and forty thousandths = _____ = _____
10. Thirteen and ten hundredths = _____ = _____
11. Four and four tenths = _____ = _____
12. Seven and fifteen hundredths = _____ = _____

4.040	13.001	0.03	4.04
0.3	4.4	4.004	7.015
7.15	13.01	13.1	13.10

• Decimal Fun

Solve each problem by working from left to right. When you finish a problem, locate the answer in a box below.

1. Take 47 → Subtract 6.55 → Add 0.22 → Multiply by 0.7 = _____
2. Take 8.63 → Add 26.4 → Multiply by 35 → Subtract 16.5 = _____
3. Take 13.779 → Multiply by 8 → Subtract 4.662 → Add 39.44 = _____
4. Take 58.2 → Add 66.489 → Subtract 123.457 → Add 8 = _____
5. Take 5.5 → Add 4.505 → Multiply by 7 → Subtract 20 = _____
6. Take 2.2 → Multiply by 8.4 → Subtract 1.477 → Add 0.33 = _____
7. Take 589 → Subtract 9.87 → Multiply by 0.4 → Add 0.048 = _____
8. Take 22.2 → Add 9.8 → Multiply by 6.5 → Subtract 0.65 = _____
9. Take 88.8 → Multiply by 0.4 → Subtract 15.32 → Add 50.8 = _____
10. Take 799 → Subtract 763.4 → Add 8.4 → Multiply by 9 = _____



DIWALI ASSIGNMENTS

Grade:-5 (SCIENCE)

Q:1 Arrange the following steps in the order you will follow them during a fire drill.

When the fire alarm rings, keep calm. Do not panic.

Assemble at the playground. Stay with your class.

Make a queue and take the exit pointed out by your teacher.

Your teacher will tell you when it is safe to go back to the classroom.

Listen carefully to your teacher's instruction.

Q:2 Read the clues and unscramble the words given below to get the names of some common levers and identify the class of the lever.

1) I am made of wood. You use me to hit a ball out of the playground for a six!

CTCKERI ATB

2) I am a long, thin pole with a string and a hook attached at one end. People use me to catch fish.

SHFIGIN ODR

3) You can see me in a playground. To swing on me, you need a friend to sit at my other end.

ESE - WSAS

Q:3 Rita's mother is a doctor. She has asked Rita to label some of her case file. Help Rita by labelling the files according to the microbes that cause these diseases. Use one of the following four labels.

VIRUS, BACTERIA, PROTOZOA, FUNGUS

- a) Common cold b) Measles c) typhoid d) tetanus
e) ringworm f) chickenpox g) amoebiasis h) dengue

Q:4 Think and answer:

- a) Why is it advised to wash a sick person's clothes in boiling water?
b) Why should a cook keep her/ his nails short?
c) Why are people living in crowded areas more likely to fall ill from communicable diseases?